

## Hydril Pressure Control Flow Selector

Enhance rig safety with reliable  
downwind gas diversion

Pressure Control Equipment: Diverters

### Applications & Benefits

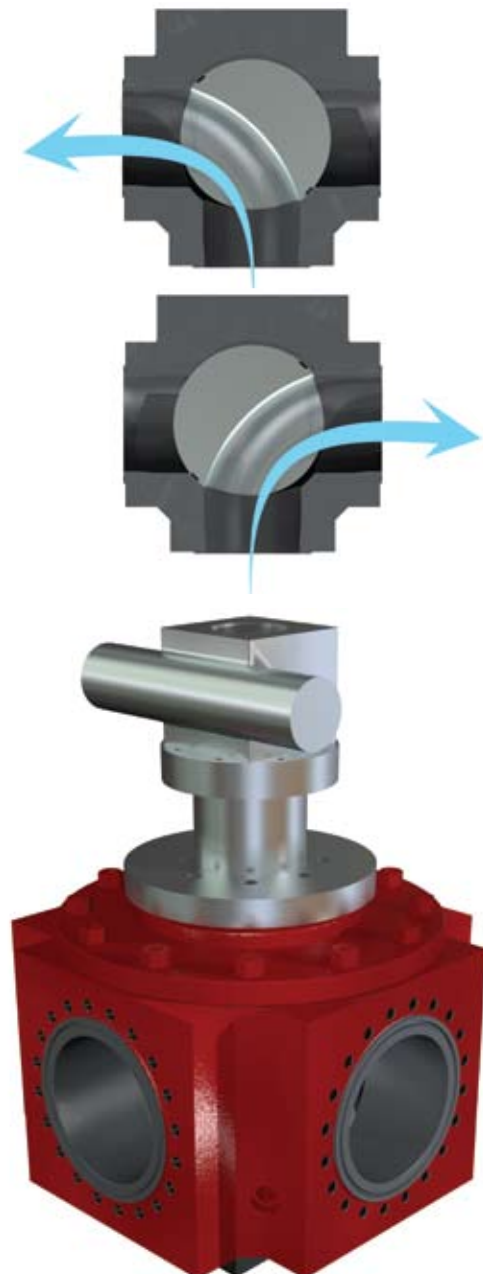
The Hydril Pressure Control Flow Selector is a rugged switchable target designed to always keep the diverter discharge line open. It replaces a target and two valves which can be shut-in unintentionally and can restrict flow area. The Flow Selector also eliminates parts and controls sequencing to reduce the potential for malfunction. This product:

- Always remains open to a preselected position for downwind overboard discharge to port or starboard; an inlet and two outlets with a hydraulically actuated plug allow for choice in flow direction
- Is designed specifically for diverter applications; it will improve system performance on any rig, new or old
- Comes in two sizes for use in either a 12" or 16" diverter vent line

### Key Features

The Flow Selector is widely used on rigs supplied with Hydril Pressure Control diverters and also with equipment from other manufacturers. It enhances efficiency by eliminating diverter valves and provides long-lived safety benefits because:

- It eliminates the possibility of system shut-in because the vent path is always open – there is no closed position
- It provides a hardened steel target, resists erosion and provides long flow life
- It operates in any physical orientation
- It can be mounted directly to the rig structure, to support vent line piping

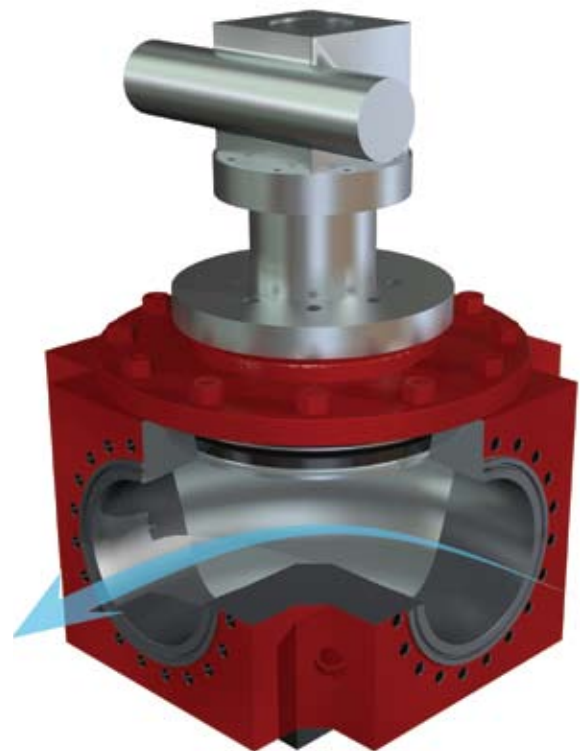
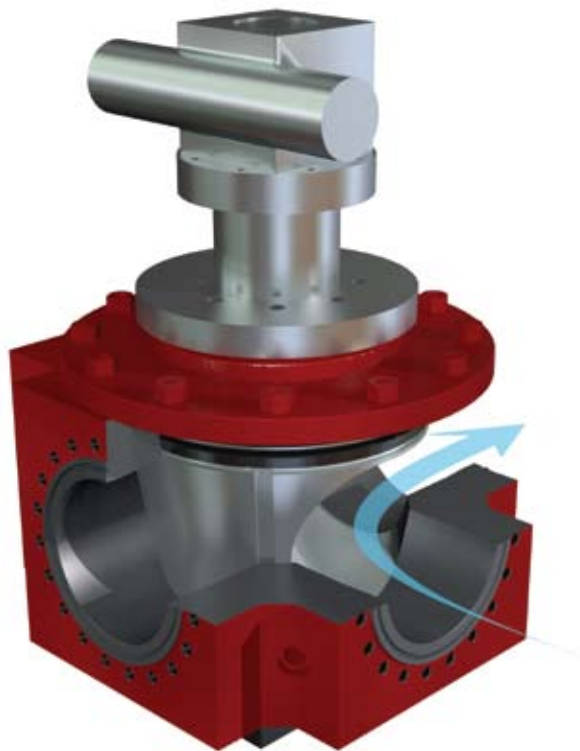


# The Hydril Pressure Control Flow Selector Advantage

By eliminating the possibility that dangerous gas flows will not be vented, the Hydril Pressure Control Flow Selector ranks among the most effective safety enhancements available – for any offshore rig.

## Engineering Data

System of Measure	U.S.	Metric	U.S.	Metric
Bore Size	12.00"	305 mm	16.00"	406 mm
Pressure Rating	720 psi	50 bar	720 psi	50 bar
Actuator Pressure	1,500-3,000 psi	103-207 bar	1,500-3,000 psi	103-207 bar
Actuator Fluid Volume	0.75 gal	2.7 L	0.75 gal	2.7 L
Weight (with Actuator)	5,250 lbs	2,382 kg	7,500 lbs	3,403 kg
Studded Faces (all three)	12.00" ANSI 300	12.00" ANSI 300	16.00" ANSI 300	16.00" ANSI 300



3300 North Sam Houston Parkway East, Houston, TX 77032

24/7 customer support: +1 281 449 2000

[geoilandgas.com/drilling](http://geoilandgas.com/drilling)



GE imagination at work